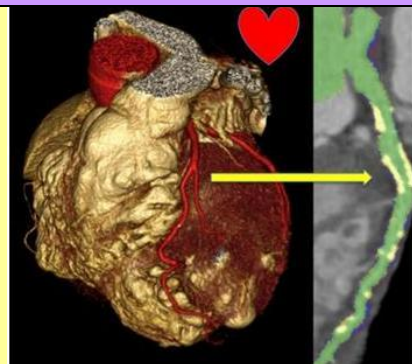


Volunteers Needed at UCLA!

Heart Imaging Test to Evaluate Chest Pain

You are invited to participate in a research study that will evaluate the usefulness of non-invasive imaging heart tests to evaluate chest pain. The study may require 1 - 2 visits of about 30 minutes to an hour and a follow-up phone call of about 15 minutes.



In order to participate, you must be:

- *Male, 55 years of age or older,*
- *Female, 65 years of age and older*
- *Males 45-54 or females 50-64 years, may also participate, if they have other existing medical conditions or risk factors that may increased the likelihood of having heart disease (i.e. diabetes, stroke, high cholesterol, smoking, etc.)*
- *Have new or worsening chest pain or symptoms of coronary heart disease*
- *Your doctor has told you that you need a test to see if you have coronary heart disease*

There is a financial compensation of up to about \$100.00 upon completion of all study-related procedures.

If interested, please call (310) 794-8974 or (310) 206-4711 for more information.

Principal Investigator: Stefan Ruehm, MD
Dept. of Radiological Sciences

Study Sponsor: NIH/NHLBI